

Quick Start Guide

Secure Terminal Over RS-232 Tool

HighSecLabs' Terminal Over RS-232 Tool allows access to a device's Terminal Mode using RS-232 commands. It provides a simple graphic interface that is ideal for configuring multiple devices with the same firmware, or for use with HSL devices such as diodes that can receive RS-232 commands but have no PC connection.

This guide provides instructions for installing, configuring, and operating the HSL Terminal Over RS-232 Tool.

Installation

Required Hardware

- A HighSecLabs device that has Terminal Mode
- A Windows PC (Windows 10/11 8GB RAM) to function as the Administrator PC
- USB-to-RJ14 cable.

Required Software

- Windows 10/11 8GB RAM
- HSL Secure Terminal to RS-232 Tool

Download and Install the Tool

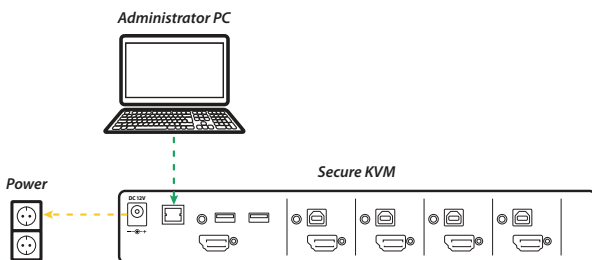
- Download the Terminal Over RS-232 Tool, which can be found here: https://highseclabs.com/dow_type/drivers-tools/
- Open the installer application.
- Choose the location to install the files and select "Next."
- Create a desktop shortcut.
- Select "Install" to begin and follow the installation wizard's instructions.

Launch the Application

- Once installation is complete, open the Terminal Over RS-232 Tool application.
- Click "About" on the upper right corner of the window to verify the current version of the application.

Connect the Administrator PC to the KVM

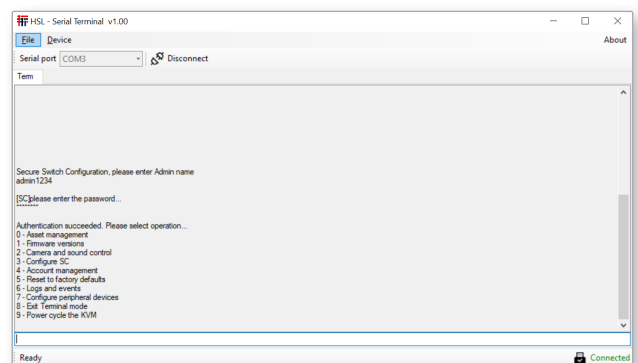
- Connect the USB-A-to-RJ14 cable to the Administrator PC's USB-A port.
- Connect the USB-A-to-RJ14 cable to the KVM's RJ14 port labeled 'RDC.'
- Power ON the KVM.



Connecting an administrator PC with the Terminal Over RS-232 Tool to a Secure 4-Port KVM.

Connect the Terminal Over RS-232 Tool to the KVM

- From the drop-down menu along the top toolbar, select the COM port that matches the connected device. This can be found in the PC's Device Manager under the section 'Ports' labeled 'COM (x).'
- If the device is connected after opening the Tool, click the icon to refresh, and the COM port will populate.
- Click the icon to connect to the device.
 - Once the KVM is connected, the status in the lower right corner will change from "Disconnected" in black to "Connected" in green, and the Connect icon on the top bar will change to for Disconnect.
- Enter the administrator username and password to enter the Administrative Terminal.
 - If logging into the Terminal for the first time, the default username and password are as follows:
 - Username: admin1234
 - Password: 1234ABCDefg!@#
 - The password must be changed upon logging in.
 - The new password must be 8 to 16 characters long and must contain uppercase letters, lowercase letters, numbers, and any of the special characters "!@#%&^*()-_".
 - The password must be entered twice to confirm.
 - Passwords can be changed at any time from the Account Management menu




Accessing the Administrative Terminal menu. The status in the lower-right corner will display 'Connected' in green to indicate a successful connection.

Operation

Once connected, the Terminal Over RS-232 Tool accepts all functions and commands of the HSL Administrative Terminal. To select a command from the terminal menu, type its corresponding number and press **ENTER**.

For complete instructions for operating the Terminal, consult the HSL PP4 Secure Products Administrator Manual, found here:

<https://highseclabs.com/download/type/admin-guidance/>

Once the device is configured, exit Terminal Mode and click the  icon to disconnect the device.